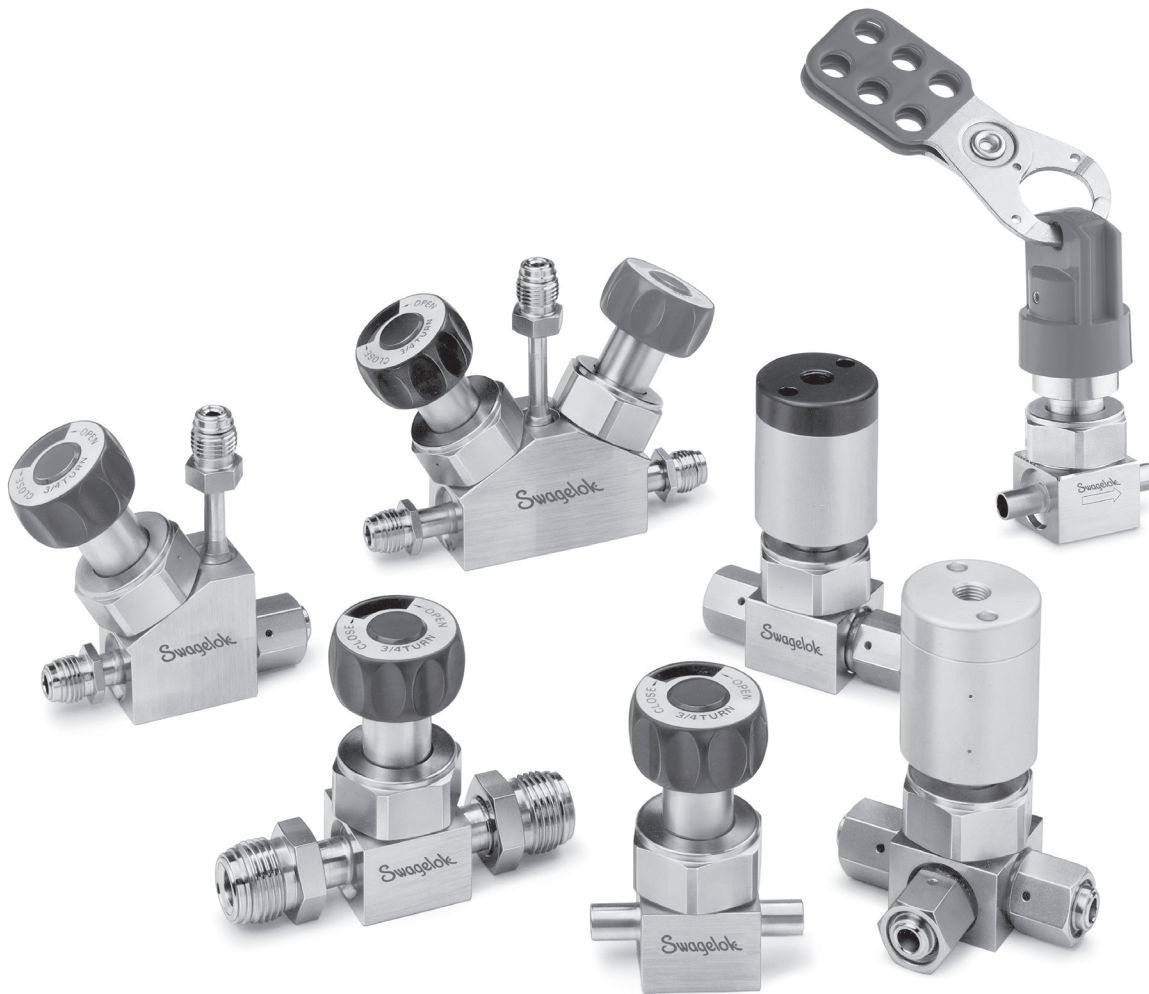


High-Flow, Springless Diaphragm Valves



DF Series

- 316L VAR stainless steel body
- Working pressures up to 300 psig (20.6 bar)
- 1/4, 3/8, and 1/2 in.; 10 and 12 mm end connections

Features

Valve

- Flow coefficient of 0.62 meets high-flow requirements.
- No springs or threads in wetted areas improves cleanliness.
- Fully swept flow path enhances purging and gas replacement.
- Minimal PCTFE volume minimizes gas adsorption and desorption.
- Fully contained seat insert increases cycle life.
- High-flow Swagelok® “H” Type VCR® fittings, Swagelok VCR fittings, and tube butt weld end connections are available.

Pneumatic Actuators

- Normally closed and normally open models are available for remote actuation.
- Actuators require low actuation pressure.
- Construction is lightweight aluminum.

Manual Actuators

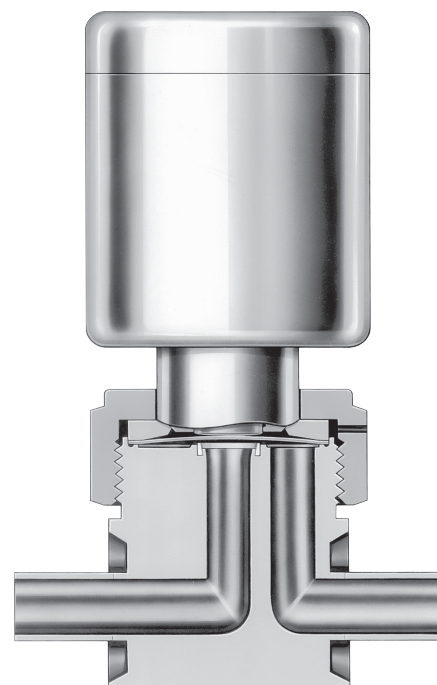
- Three-quarter turn actuation
- Choice of seven handle colors

Round Handle

- Window handle provides visual indication of open and closed positions.

Integral Lockout Handle

- Standard padlock or lockout device secures handle in closed position.
- Handle orientation provides visual indication of open or closed position.



Technical Data

Model	Working Pressure psig (bar)		Temperature Rating °F (°C)		Flow Coefficient (C _v)	Orifice in. (mm)	Internal Volume in. ³ (cm ³)	Pneumatic Actuator	
	Operating	Burst	Operating ^①	Bakeout ^②				Actuation Pressure psig (bar)	Air Displacement in. ³ (cm ³)
Manual	Vacuum to 300 (20.6)	3200 (220)	-10 to 150 (-23 to 65)	302 (150) (valve open)	0.62	0.23 (5.8)	0.27 (4.4) body with HVCR fittings	—	—
Pneumatic	Vacuum to 125 (8.6)							70 to 100 (4.9 to 6.8)	0.13 (2.1)

① See **Polyimide Seat Material**, page 4, for operating temperatures up to 270°F (132°C).

② Contact your authorized Swagelok sales and service representative for more information.

Process Specifications

See Swagelok *Ultra-high-Purity Process Specification (SC-01)* catalog, [MS-06-61](#); Swagelok *Photovoltaic Process Specification (SC-06)* catalog, [MS-06-64](#); and Swagelok *Special Cleaning and Packaging (SC-11)* catalog, [MS-06-63](#), for details on processes, process controls, and process verification.

Cleaning	Assembly and Packaging	Process Designator	Process Specification	Wetted Surface Roughness (R _a)	Testing
Ultra-high-purity cleaning with a continuously monitored, deionized water, ultrasonic cleaning system	Performed in ISO Class 4 work areas; valves are double bagged and vacuum sealed in cleanroom bags.	P	<i>Ultra-high-Purity Process Specification (SC-01)</i>	Electropolished and finished to an average of 5 μin. (0.13 μm)	Inboard and internal helium leak tested to a maximum leak rate of 1 × 10 ⁻⁹ std cm ³ /s in accordance with SEMI F1
High-purity cleaning with a continuously monitored, deionized water, ultrasonic cleaning system	Performed in specially cleaned areas; valves are individually bagged.	P6	<i>Photovoltaic Process Specification (SC-06)</i>		
Special cleaning with non-ozone-depleting chemicals	Performed in specially cleaned areas; valves are individually bagged.	P1	<i>Special Cleaning and Packaging (SC-11)</i>		

Performance Specifications

Refer to *DF Series Diaphragm Valve Technical Report*, MS-06-14, for additional information on particle counting, moisture analysis, hydrocarbon analysis, ionic cleanliness, and lab cycle testing data.

Materials of Construction

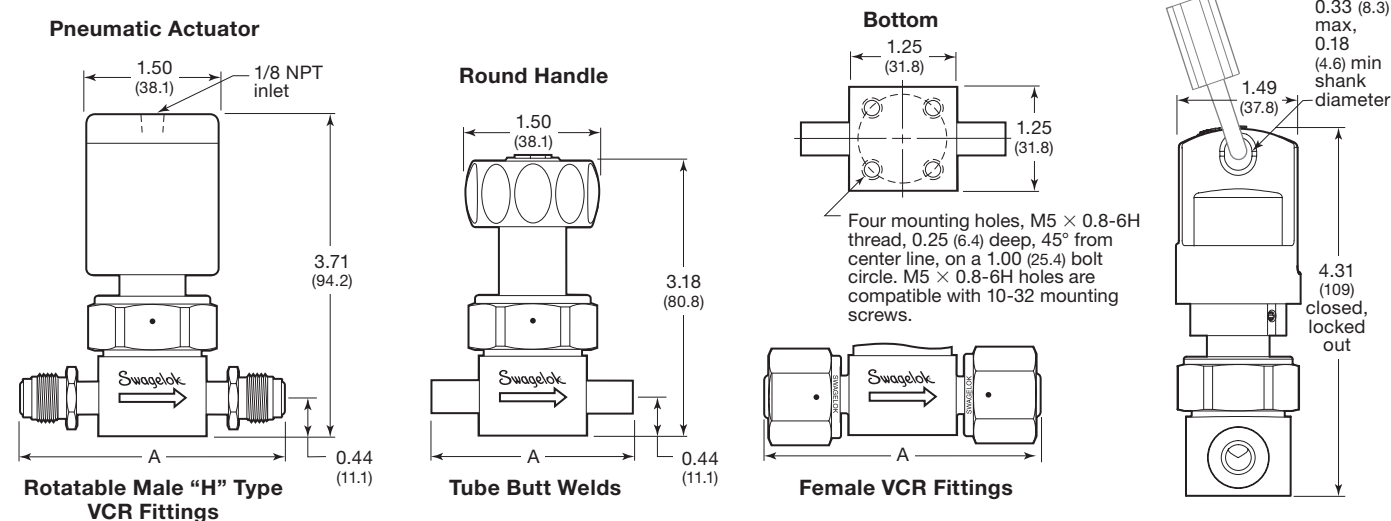
Component	Material Grade/ ASTM Specification	Component	Material Grade/ ASTM Specification
Valve		Round Handle	
<i>Body</i>	<i>316L VAR SS/ SEMI F20 High-Purity^①</i>	Handle	Polyester with SS insert
<i>Seat</i>	<i>PCTFE</i>	Actuator, bonnet nut	316 SS
<i>Diaphragms</i>	<i>Cobalt-based superalloy (UNS R30003)/AMS 5876</i>	Integral Lockout Handle	
		Handle	Glass-filled nylon
Pneumatic Actuator		Set screws	Alloy steel/F912
Cylinder, cap, pistons	Aluminum	Retaining ring	PH 15-7 Mo® SS
O-rings	Buna N	O-rings	Fluorocarbon FKM
Springs	S17700 SS	Sleeve, base	Powdered metal SS

Wetted components listed in *italics*.

① 20 % minimum elongation allowed.

Ordering Information and Dimensions

Dimensions, in inches (millimeters), are for reference only and are subject to change.



End Connections		Basic Ordering Number	A in. (mm)
Inlet/Outlet	Size		
Female "H" type VCR fittings	1/4 in.	6LV-DFHFR4-	2.78 (70.6)
Rotatable male "H" type VCR fittings	1/4 in.	6LV-DFHMR4-	2.96 (75.2)
Female/rotatable male "H" type VCR fitting	1/4 in.	6LV-DFHFR4HMR4-	2.96 (75.2)
Female VCR fittings	1/2 in.	6LV-DFFR8-	4.16 (106)
Rotatable male VCR fittings	1/2 in.	6LV-DFMR8-	4.16 (106)
Tube butt welds	3/8 × 0.035 in.	6LV-DFBW6-	2.25 (57.1)
	1/2 × 0.049 in.	6LV-DFBW8-	
	10 × 1 mm	6LV-DFBW10M-	
	12 × 1 mm	6LV-DFBW12M-	

Valves with Round Handles or Pneumatic Actuators

Select a basic ordering number, add a process designator (see page 2), then add a pneumatic actuator or handle color designator.

Examples: 6LV-DFHFR4-**P-BK** for P process, black handle
 6LV-DFHMR4-**P1-C** for P1 process, normally closed pneumatic actuator

Pneumatic Actuator	Designator
Normally closed	-C
Normally open	-O
Normally closed with indicator switch	-CM

Handle Color	Designator
Black	-BK
Blue	-BL
Green	-GR
Orange	-OR
Red	-RD
White	-WH
Yellow	-YW

Valves with Integral Lockout Handles

Insert **L** into a basic ordering number, add a process designator (see page 2), then add a handle color designator.

Examples: 6LV-DFLHFR4-**P-BK** for P process, black handle
 6LV-DFLHMR4-**P6-BL** for P6 process, blue handle

Options and Accessories

Polyimide Seat Material

- DF series valves with polyimide seats are rated for operating temperatures from 50 to 270°F (10 to 132°C).
- Pneumatic actuators contain fluorocarbon FKM O-rings.
- All other materials and ratings remain the same.

To order, insert **V** into the valve ordering number.

Example: 6LV-DFLVBW8-P-C

Indicator Switch

- Transmits a signal to an electrical device indicating either the open or closed position of a pneumatically actuated valve.
- Features a single-pole, single-throw switch rated at:
 - 1/2 A for 115 V (ac) for normally open switch;
 - 1/4 A for 115 V (ac) for a normally closed switch;
 - 40 to 185°F (-40 to 85°C) temperature.
- Includes a 24 in. (61 cm) wire lead with an inline clip.
- Is available assembled on any normally closed, pneumatically actuated DF series valve or for field assembly.



Factory-Assembled Indicator Switches

To order a valve with an indicator switch, add **M** for a normally open switch or **M-2** for a normally closed switch to the valve ordering number.

Examples: 6LV-DFHFR4-P-CM
6LV-DFBW8-P-CM-2

Indicator Switch Kits

To order a kit for an existing valve, use ordering number **MS-ISK-DF-CM** for a normally open switch or **MS-ISK-DF-CM-2** for a normally closed switch.

Kits include actuator and switch.

Oxygen Service Hazards

For more information about hazards and risks of oxygen-enriched systems, refer to *Oxygen System Safety* technical report, [MS-06-13](#).

Warranty Information

Swagelok products are backed by The Swagelok Limited Lifetime Warranty. For a copy, visit [swagelok.com](#) or contact your authorized Swagelok representative.

⚠ WARNING

Do not mix/interchange Swagelok products or components not governed by industrial design standards, including Swagelok tube fitting end connections, with those of other manufacturers.

Panel Mounting

- Is available for round-handle valves.
- Includes threaded bonnet nut and 1 1/8 in. hex panel mount nut.
- Requires 0.96 in. (24.4 mm) diameter hole.



To order, add **-PM** to the valve ordering number.

Example: 6LV-DFHFR4-BK-PM

Maintenance Kits

Diaphragm Replacement Kits

Kits include two diaphragms and replacement instructions.

Ordering number: **E-3DK-DF**



Actuator Replacement Kits

Kits include all components except body, seat, and diaphragms.

Actuator Kit	Ordering Number
Green round handle	PY-DF-K1-GR
Green integral lockout handle	NY-DFL-K1-GR
Normally closed pneumatic with Buna N O-rings	A-DF-K1-C
Normally open pneumatic with Buna N O-rings	A-DF-K1-O
Normally closed pneumatic with fluorocarbon FKM O-rings, for use with polyimide seat option	A-DFV-K1-C
Normally open pneumatic with fluorocarbon FKM O-rings, for use with polyimide seat option	A-DFV-K1-O

Select a kit ordering number.

To order a kit with a round handle or integral lockout handle of another color, replace **GR** with a handle color designator.

Example: PY-DF-K1-BK

Color	Designator
Black	BK
Blue	BL
Orange	OR
Red	RD
White	WH
Yellow	YW

Multiport and Elbow Valves and Monoblock Manifolds

DF series valves are available in multiport and elbow configurations and monoblock manifolds; refer to *Bellows- and Diaphragm-Sealed Multiport and Elbow Valves and Monoblock Manifolds* catalog, [MS-02-442](#).

Safe Product Selection

When selecting a product, the total system design must be considered to ensure safe, trouble-free performance. Function, material compatibility, adequate ratings, proper installation, operation, and maintenance are the responsibilities of the system designer and user.